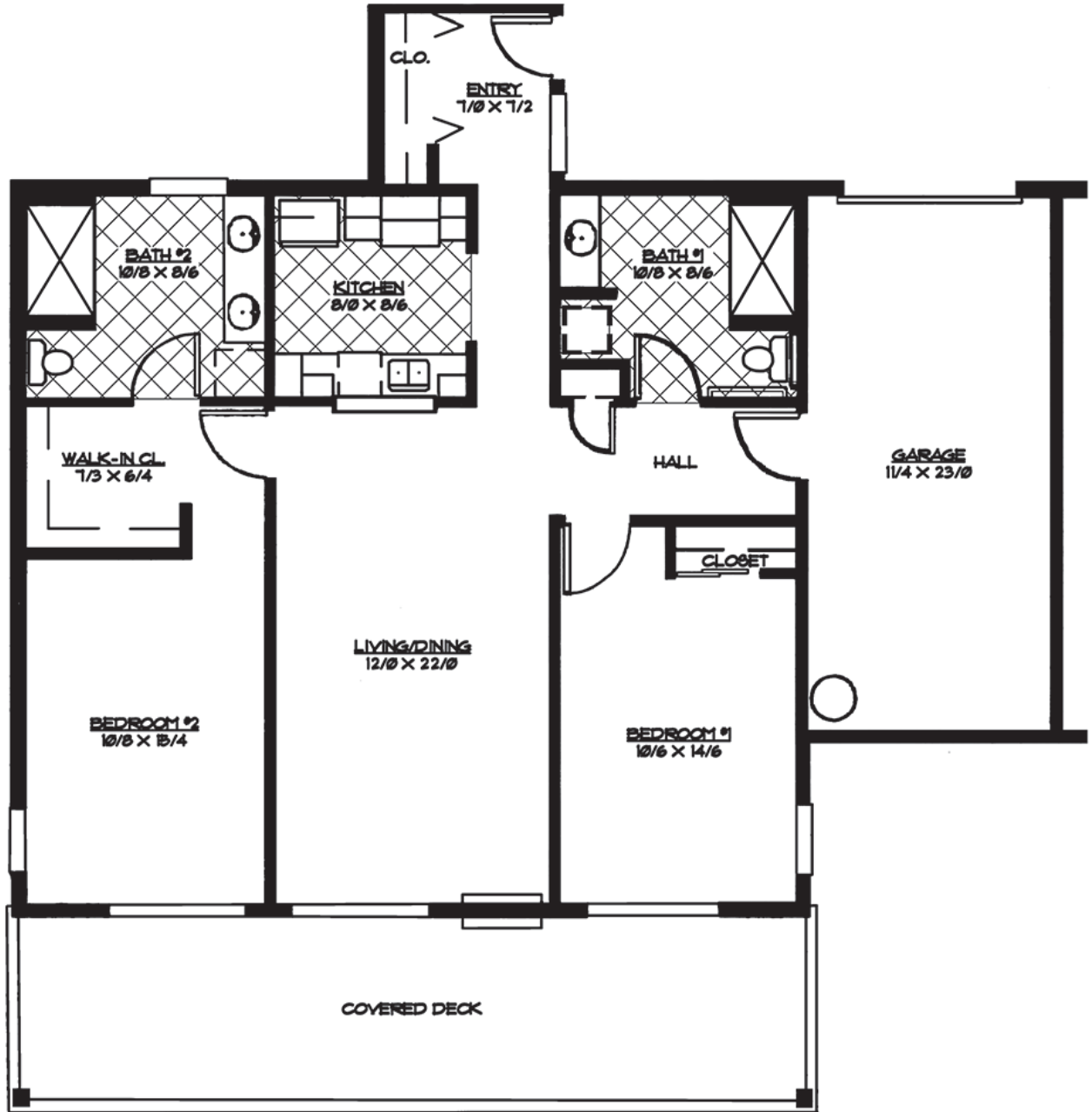


**CherryWood**  
 V I L L A G E  
*Retirement Community*  
**(503) 408-0404**



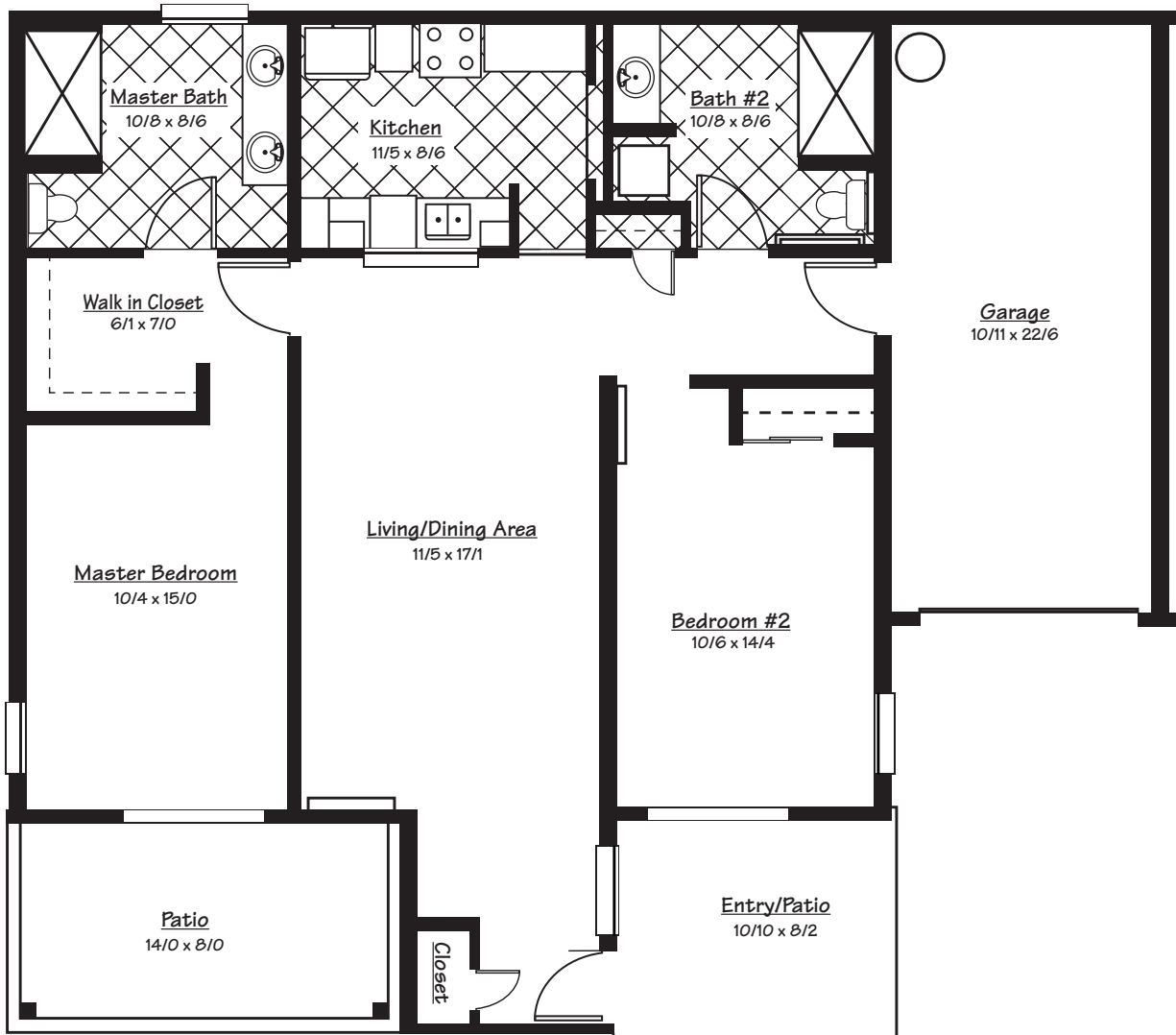
## The Cottage - Four Plex Upper Level

*1,184 Square Feet + Deck*

*Floor plans and square footages are approximate.*

CherryWood Village | 1417 SE 107th Ave, Portland, OR 97216 | [www.CherryWoodVillage.net](http://www.CherryWoodVillage.net)

**CherryWood**  
 V I L L A G E  
*Retirement Community*  
**(503) 408-0404**



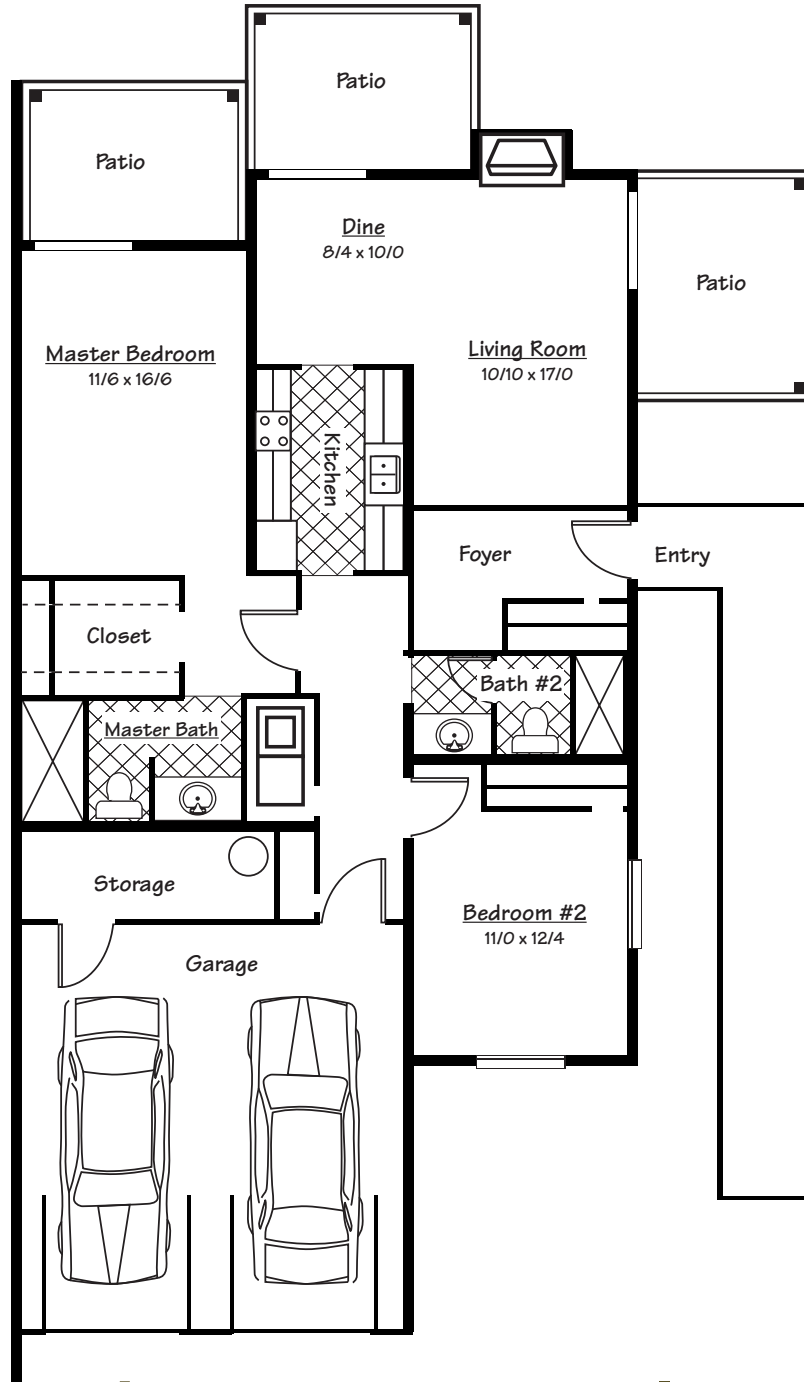
## The Cottage - Four Plex Lower Level

*1,184 Square Feet + Patio or Deck*

*Floor plans and square footages are approximate.*

CherryWood Village | 1417 SE 107th Ave, Portland, OR 97216 | [www.CherryWoodVillage.net](http://www.CherryWoodVillage.net)

**CherryWood**  
 V I L L A G E  
*Retirement Community*  
**(503) 408-0404**



## The Cottage - Duplex

1,290 Square Feet + Patios

*Floor plans and square footages are approximate.*

CherryWood Village | 1417 SE 107th Ave, Portland, OR 97216 | [www.CherryWoodVillage.net](http://www.CherryWoodVillage.net)