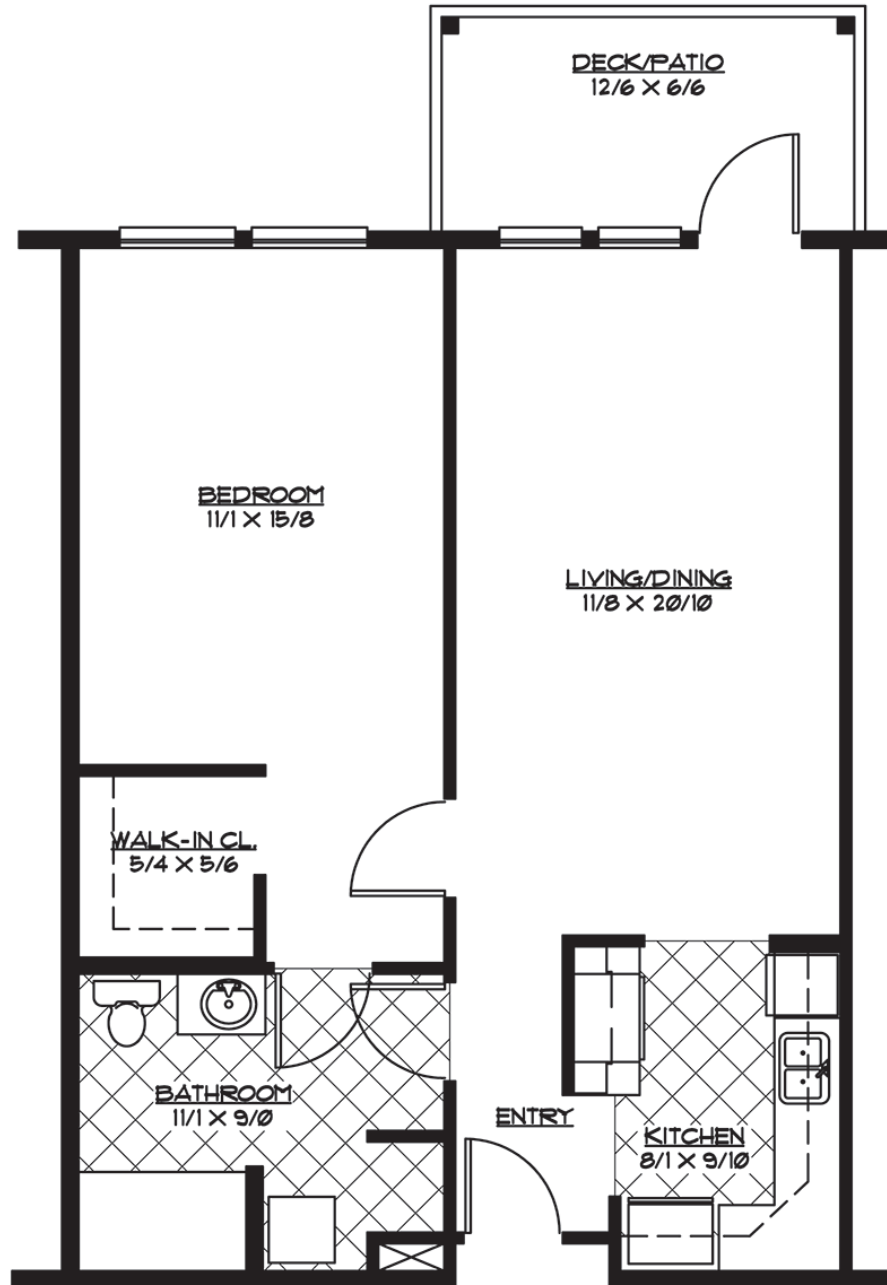


CherryWood
 V I L L A G E
Retirement Community
(503) 408-0404

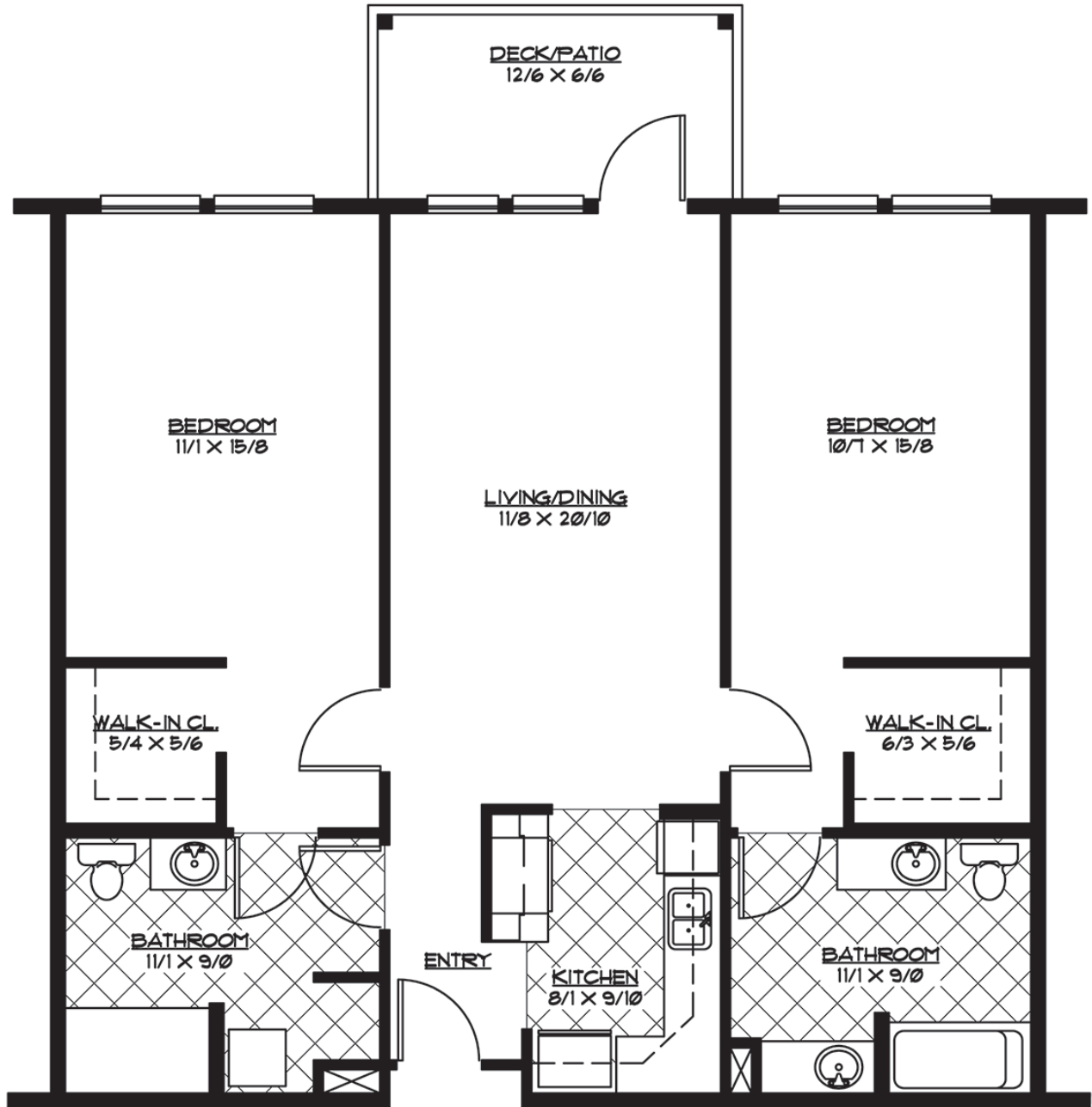


The Gardens - 1 Bedroom

768 Square Feet

Floor plans and square footages are approximate.

CherryWood
 V I L L A G E
Retirement Community
(503) 408-0404



The Gardens - 2 Bedroom

1,088 Square Feet

Floor plans and square footages are approximate.

CherryWood Village | 1417 SE 107th Ave, Portland, OR 97216 | www.CherryWoodVillage.net