

CherryWood
 V I L L A G E
Retirement Community
(503) 408-0404



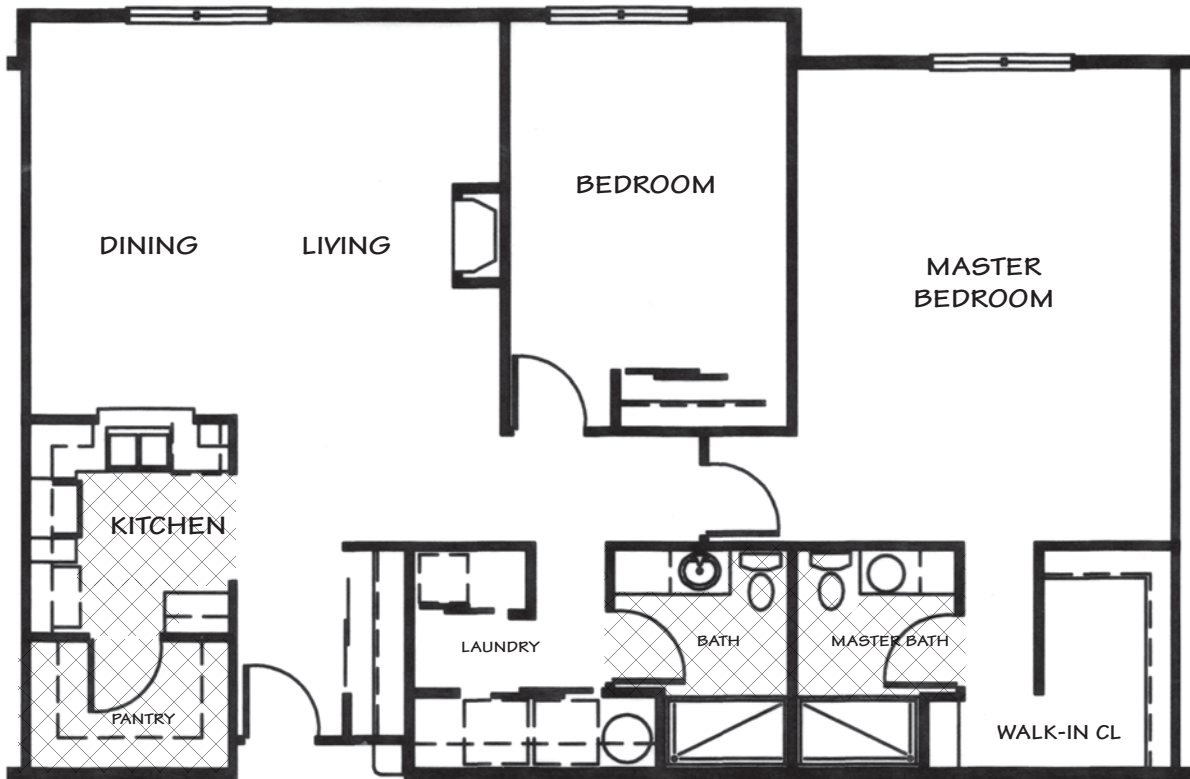
The Penthouse (#501 & #502)

1530 Square Feet

Floor plans and square footages are approximate.

CherryWood Village | 1417 SE 107th Ave, Portland, OR 97216 | www.CherryWoodVillage.net

CherryWood
 V I L L A G E
Retirement Community
(503) 408-0404



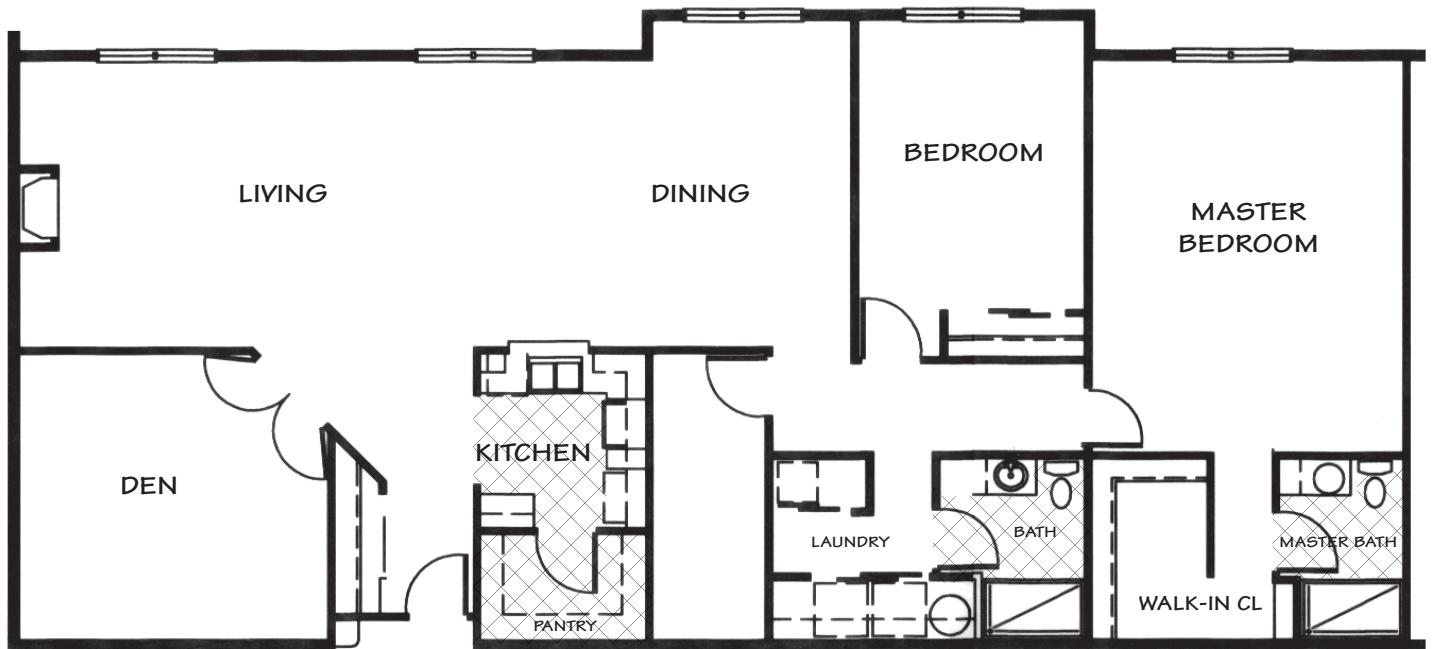
The Penthouse (#503)

1505 Square Feet

Floor plans and square footages are approximate.

CherryWood Village | 1417 SE 107th Ave, Portland, OR 97216 | www.CherryWoodVillage.net

CherryWood
 V I L L A G E
Retirement Community
(503) 408-0404



The Penthouse (#504 & #509)

2143 Square Feet

Floor plans and square footages are approximate.

CherryWood Village | 1417 SE 107th Ave, Portland, OR 97216 | www.CherryWoodVillage.net

CherryWood
 V I L L A G E
Retirement Community
(503) 408-0404



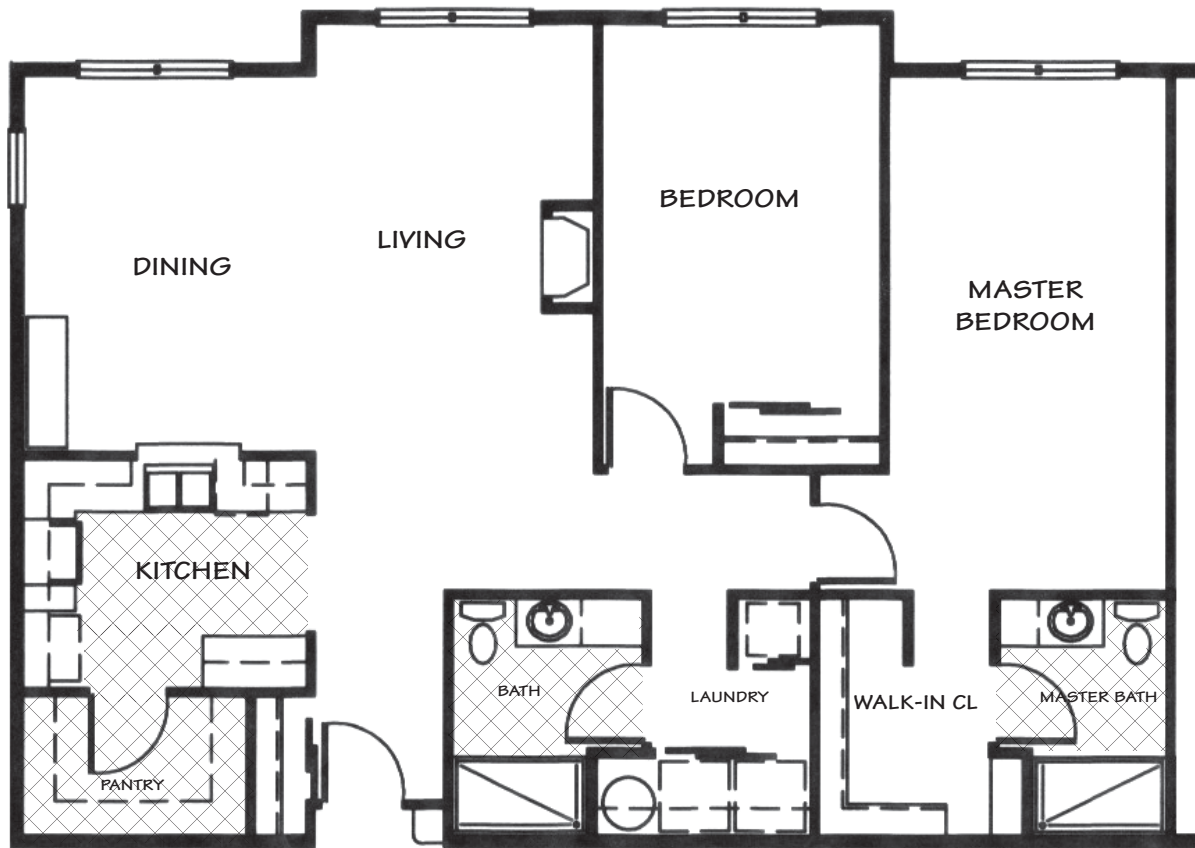
The Penthouse (#505 & #508)

1988 Square Feet

Floor plans and square footages are approximate.

CherryWood Village | 1417 SE 107th Ave, Portland, OR 97216 | www.CherryWoodVillage.net

CherryWood
 V I L L A G E
Retirement Community
(503) 408-0404



The Penthouse (#506 & #507)

1380 Square Feet

Floor plans and square footages are approximate.

CherryWood Village | 1417 SE 107th Ave, Portland, OR 97216 | www.CherryWoodVillage.net